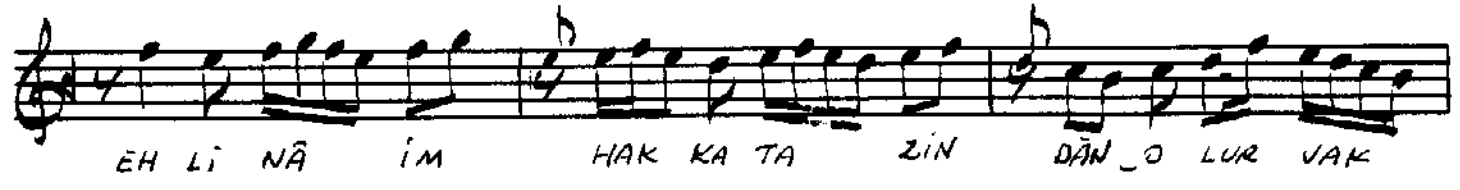
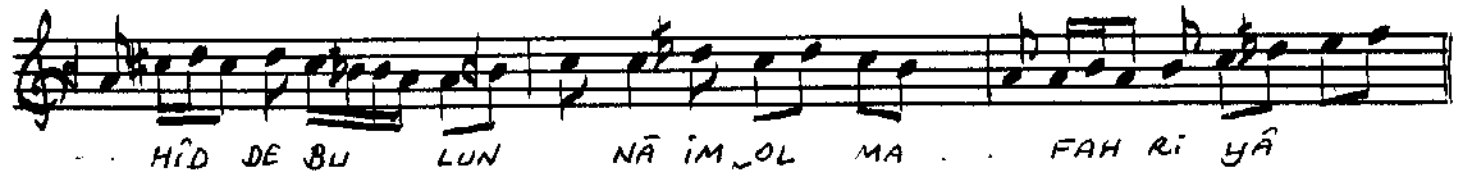
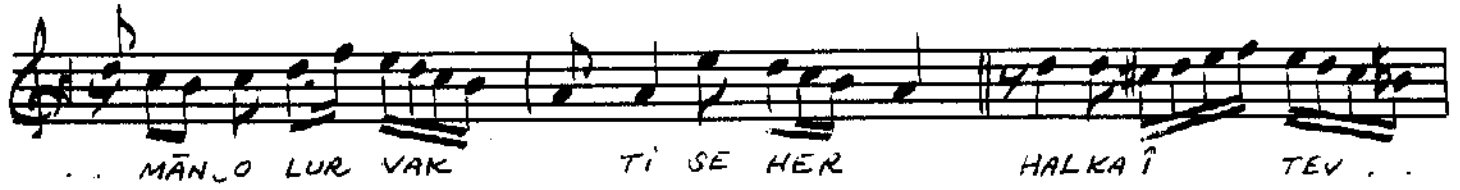


USÜLÜ: Dügək

BEYÂTÎ ILÂHÎ

Beste: SELÂHADDİN DEMİRTAŞ
"SALÂHÎ DEDE"
Gäfte: Seyh FAHREDDİN EF.

1.



Vakıf'da icra edildiği şekliyle Doğan Dikmen'in yazdığı notadan genişleterek yeniden yazdım.

11. 4. 1993

İmre Koral